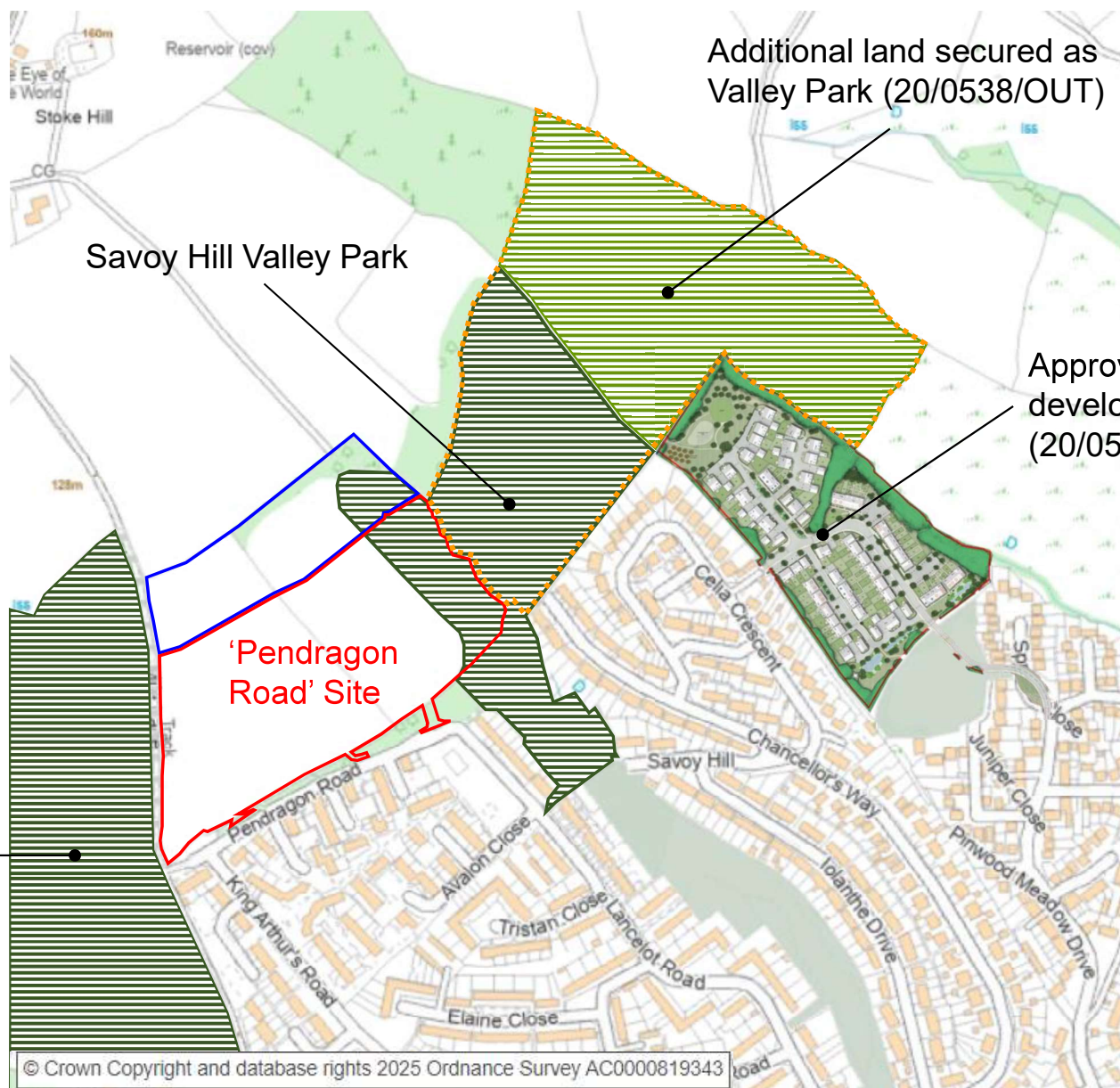


The legal agreements for 21/0020/OUT and 22/0511/OUT ('Pendragon Road' site) secure a minimum of 10% of the combined area (shown outlined in blue and red) as public open space, which will be transferred to a Management Company prior to occupation of the final dwelling. The legal agreements do not secure the adjacent land to the site outlined in blue as public open space, which is 26% of the combined area. However, it is possible that this land could be included in the public open space to be transferred.



Mincinglake Valley Park





**View of 'Pendragon Road' site (east field only) from Savoy Hill Valley Park**





**View of 'Pendragon Road' site (east field only) from Savoy Hill Valley Park**

